

#illegalimages Psychosexual Evaluations for CP Offenders

Elizabeth Griffin, MA, LMFT

952-451-0771

elizgrif@gmail.com

www.internetbehavior.com/legal




1



2

TQ

3



Expert Basics

- Michael Seto (many articles, books, CPORT, CASIC, SSPI, etc.)
- Other Names: Babchishin, McPhail, Quayle, Hanson, Henshaw, Andrews, Bonta,
- Psychology of Technology
 - Digital World (Suler, Rimer, Quayle, Delmonico & Griffin, Aboujaoude, etc.)
- 2021 U.S. Sentencing Commission Report on Child Pornography
- Appropriate Risk Assessment Tools for Child Pornography Offenders
- Research on Pedophilia
 - Assessments of Sexual Interest (Abel, The Look, PPG, Polygraph, etc.)
- Association for the Treatment of Sexual Abusers (ATSA)


4



5

Background and History (Andrews & Bonta)

- Areas Related to Risk & Contributing Factors
 - Relationships (Family, Friends, Sexual/Romantic)
 - School/Employment
 - Leisure/Recreation
 - Mental Health/Significant Physical Health
 - Mood Disorders, Post Traumatic Stress Disorder, Schizophrenia Spectrum Disorder, Autism Spectrum Disorder, Intellectual Disabilities, ADHD, Hypersexuality, OCD
 - Antisocial Lifestyle (History, Personality Patterns, Cognitions, Associates)
 - Offense Behavior/Attitude/Accountability
- Collateral Interviews



6



7

Testing and Assessments

- Psychological Testing
 - MMPI – Minnesota Multiphasic Personality Inventory
 - MCMI – Millon Clinical Multiaxial Inventory
 - PAI – Personality Assessment Inventory
- Assessments/Screening
 - Hypersexuality Behavior Index
 - Internet Sex Screening Test
 - Trauma Symptom Inventory
 - Adverse Childhood Experiences (ACE)
 - Autism Spectrum Assessments (RAADS, AQ-10)
 - Wechsler Adult Intelligence Scale (IQ)
- Objective Information to Support Background and History
 - Leads towards Contributing Factors and Risk

8

Terminology

- Pedophilia (Pedophilic Disorder)
 - Prepubescent
- Hebephilia
 - Pubescent/Just beginning sexual maturity
 - Tween
 - **NOT** an official Diagnosis
- Teleiophilia
 - Sexual Mature Body (Adult & Adolescent)

9

Testing and Assessments

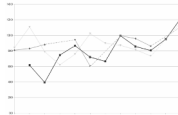
- Pedophilic Disorder
 - Diagnosis
 - Prepubescent Children (Physical Development vs. Age – Tanner Scale)
 - Typically Considered a Life-Long Diagnosis with Early Onset
 - Exclusive vs Non-Exclusive
 - In 2023 More Complicated Diagnosis
 - Some CP clients clearly do not have persistent sexual interest in prepubescent children
 - May meet criteria at one time and not later

E

10

Testing and Assessments

- Research
 - 50% Pedophilic / 50% Non-Pedophilic
 - Girls vs Boys
 - Non-Exclusive vs Exclusive
 - Latest Research
 - Non-Exclusive Individuals with Pedophilic Interest (Interest in Children & Adults)
 - Low rates of sexual recidivism (Exclusive 5X that of Non-Exclusive)
 - Significant lower rates of contact sexual offenses
- Pedophilic Disorder is not “the kiss of death”
 - More concerning if pedophilic and antisocial



E

11

Testing and Assessment

- Pedophilic Disorder
 - Possession of CP alone is not sufficient for diagnosis
 - Sexual Interest Testing (Abel/Affinity/Look)
 - Deceptive Measures and Expert Scored
 - Penile Plethysmograph (PPG)
 - Correlates of Sexual Interest in Children (CASIC)
 - Never Married or 2 year co-habitation
 - Child Pornography Videos
 - Child Pornography more than 2 years
 - Volunteering in role with high access to children
 - Engaging in Online Sexual Communication with a minor
 - Screening Scale for Pedophilic Interest - 2
 - Self-Report

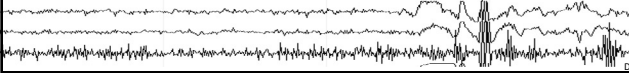
E

12

Testing and Assessments

- Lie Detection
 - Polygraph
 - EyeDetect
 - Latest technology on truth verification
 - Eye Dilation, Eye Movement, Other Eye Behaviors

- Conduct outside of formal psychosexual evaluation process
- Can add to report if court would perceive a concern, if no concerns....



13

Testing and Assessments

• Forensic Evidence

- Complete Forensic Exam - Typically Helpful
- Child Abuse Material Inventory (CAMI) (Parsons, Honyara, Delmonico, & Griffin 2013)

• Developed Based on Research

- Boys versus Girls
- Smaller age range versus larger age range
- Talking with minors
- AP vs CP



14



15

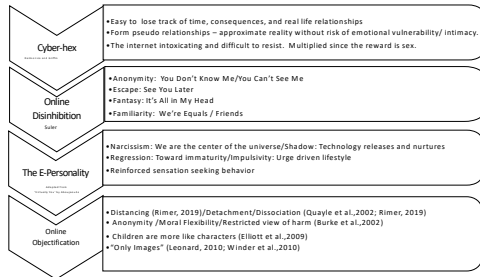
Psychology of Technology

- It is recognized that these features of technology **cannot be ignored** as a factor in sexual offense behavior in the online world. (Quayle et al., 2010; Rimer, 2019)
- Function of the Internet is a crucial aspect of some types of online sexual offending (Merdian et al. 2016; Sheldon and Howe, 2007; Surjadi, 2010)
- Internet can facilitate sexual offending through the Triple A Engine (Seto 2013)



16

Psychology of Technology



17

Contributing and Mitigating Factors

- Adolescent Brain Development (up to 27/28 years old)
- Early Exposure to CP/Sexualization/Sexual Abuse
- Significant Mental Health Issues
 - Mood Disorders (Anxiety, Depression, Bi-Polar)
 - Substance Use Disorders
 - Post Traumatic Stress Disorder
 - Schizophrenia Spectrum Disorder
 - Neurodevelopment Disorder
 - Autism Spectrum Disorder/Intellectual Disabilities/ADHD
 - OCD
 - Hypersexuality
 - Pedophilic Disorder



18

E=mc²

**Psychology of Technology +
Contributing Factors = Perfect Storm**

Helps Contextualize Why Individuals with:

- No significant criminal history
- No history of contact offending
- No sexual interest in children (many)

...are viewing child pornography

19



20

Risk and Sentencing Considerations

- Risk Assessments
 - Cannot use Static 99R. Can only use....
- Child Pornography Risk Tool (CPORT) (Seto, 2015)
 - Age
 - Past Criminal History/Failure on Conditional Release
 - Contact Sexual Offending with Formal Response
 - Pedophilic or Hebephilic Sexual Interest
 - More Boy CP/More Boy Other Material
- Risk Matrix 2000
 - Age
 - Past Sexual Offense Convictions/Past Criminal History
 - More Male CP
 - No Cohabitation for 2 or More Years

21

Risk and Sentencing Considerations

- U.S. Sentencing Commission Report (2012, 2021)
 - The content of an offender's child pornography collection and the nature of an offender's collecting behavior (**in terms of volume, the types of sexual conduct depicted in the images, the age of the victims depicted, males, and the extent to which an offender has organized, maintained, and protected his collection over time, including through the use of sophisticated technologies**)
 - The degree of an offender's involvement with other offenders — in particular, in an Internet "community" devoted to child pornography and child sexual exploitation; (**Maybe**)
 - Whether an offender has a history of engaging in sexually abusive, exploitative, or predatory conduct in addition to his child pornography offense.



22

Risk and Sentencing Considerations

- Factors that Positively Impact Risk for **Recidivism**
 - Age/Age/Age
- Protective Factors (de Vries, Mann, Maruna, and Thornton, 2015)
 - Healthy Sexual Interests
 - Capacity for Emotional Intimacy
 - Constructive Social/Professional Support
 - Goal Directed Living/Good Problem Solving
 - Engaged in Employment/Constructive Leisure
 - Sobriety
 - Hopeful, Optimistic, and Motivated Attitude to Desistance
- Treatment
 - 5% to 8% Impact on Recidivism
 - CP Offenders
 - Significantly less likely to miss treatment appointments and or drop out of treatment
 - Significantly less likely to fail in the community



23

Risk and Sentencing Considerations

- Large groups of CP Internet offenders pose a low risk
 - A small subgroup does appear to move on to a....
 - A contact sex offense – 2% (Seto & Eke, 2010)
 - A new CP Charge - 5% (Seto & Eke, 2010)
 - A contact sex offense 2.7% after 13 years (Elliott et al., 2019)
 - Any sexual offense 5.7% (Faust et al, 2009) (US Federal BOP)
- 1,093 Non-Production CP Offenders (2021 U.S. Sentencing Commission)
 - 27.6% Recidivism Rate
 - 16.0% General Criminal Recidivism - No Sexual Offense
 - **4.3 % Sexual Recidivism**
 - 7.3 % Failing to Register as a Sex Offender



24

Risk and Sentencing Considerations

- Myths
 - All sex offenders are the same and all are high risk for sexual recidivism
 - Not any research in the last 30 years to support this statement
- High Risk Sex Offenders
 - Pedophilia/Antisociality
 - Violent
 - Individuals with known past contact sexual offense behavior
- Low Risk Individuals
 - Typically do not have the combination of pedophilia/antisociality
 - Are significantly impacted by system interventions
 - Especially prosocial individuals
 - Jail/Prison Time/Accountability of Probation
 - Treatment

25

Risk and Sentencing Considerations

- The Risk Principle
 - High Risk = High Intensity Consequences/Treatment
 - Low Risk = Low Intensity Consequences/Treatment
- Research Indicates that...
 - **The system creates a higher risk for sexual recidivism if consequences/treatment doesn't match risk level.**



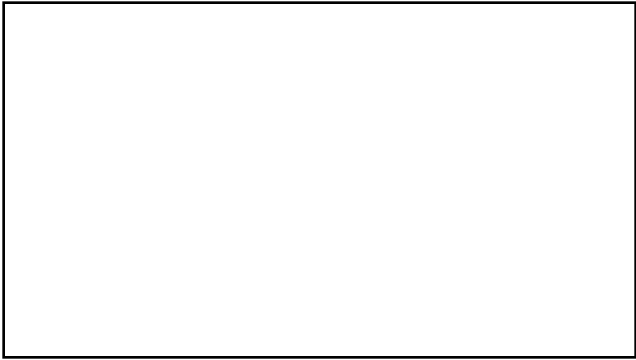
26

Online Sex Offender Evaluations

~ The Top Five Key Points ~


1. Online sexual offenses are different. Your experts should know technology and the research related to online sexual offenders.
2. Background and History should be related to research on risk & contributing factors.
3. It is important your expert uses relevant testing and assessments.
4. The foundation for contributing and mitigating factors should be made in Background and History/Testing and Assessment sections.
5. A comprehensive risk assessment (risk factors/protective factors) and attention to **sentencing considerations are critical.**

27



28

#illegalimages
Psychosexual Evaluations for CP Offenders



Elizabeth Griffin, MA, LMFT
952-451-0771
elizgrif@gmail.com
www.internetbehavior.com/legal

29